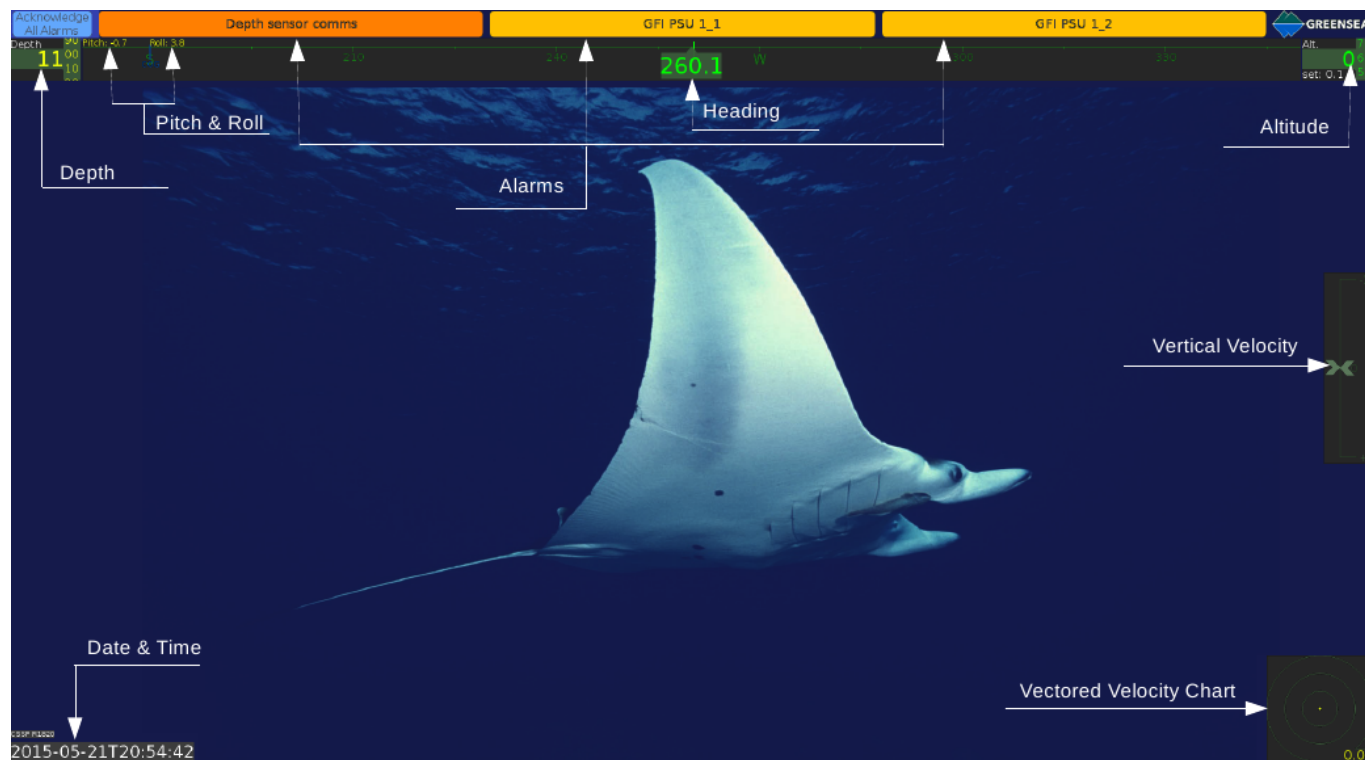


Video Overlay Overview

Published on Greensea Knowledge Base (<http://localhost:8888/kb2017>)

Video Overlay Overview

The video HUD displays the vehicle's video feed. Additionally, the basic functions needed for navigation and control are included on the video HUD. The annotated image and accompanying table outline the overlay's functionality.



Function	Description
Alarms	Alarms are displayed across the top of the video HUD.
Heading	The vehicle's compass heading is shown at top dead center of the overlay. Pitch and Roll are displayed in yellow as they are on the main workspace screen.
Depth	The vehicle's depth is displayed in the top left corner of the overlay in yellow. The color of the depth reading will change to green and "set: 0.1" will appear when Auto Depth functionality is enabled.
Altitude	The vehicle's depth is displayed in the top right corner of the overlay in yellow. The color of the altitude reading will change to green and "set: 0.1" will appear when "Auto Altitude" function is enabled.
Vertical Velocity	The vehicle's vertical velocity is displayed on the sliding indicator at right.
Date and Time	The date and time are displayed in the bottom

Video Overlay Overview

Published on Greensea Knowledge Base (<http://localhost:8888/kb2017>)

	left corner of the overlay.
Velocity Chart	A vectored chart of the vehicle's axial and lateral velocity is shown in the bottom right corner of the overlay.

Category: [Workspace - Flight View](#) [1]

Applies to: [Video View](#) [2]

Article ID: 57

Source URL: <http://localhost:8888/kb2017/video-overlay-overview>

Links

[1] <http://localhost:8888/kb2017/main-categories/workspace-flight-view>

[2] <http://localhost:8888/kb2017/applies/video-view>