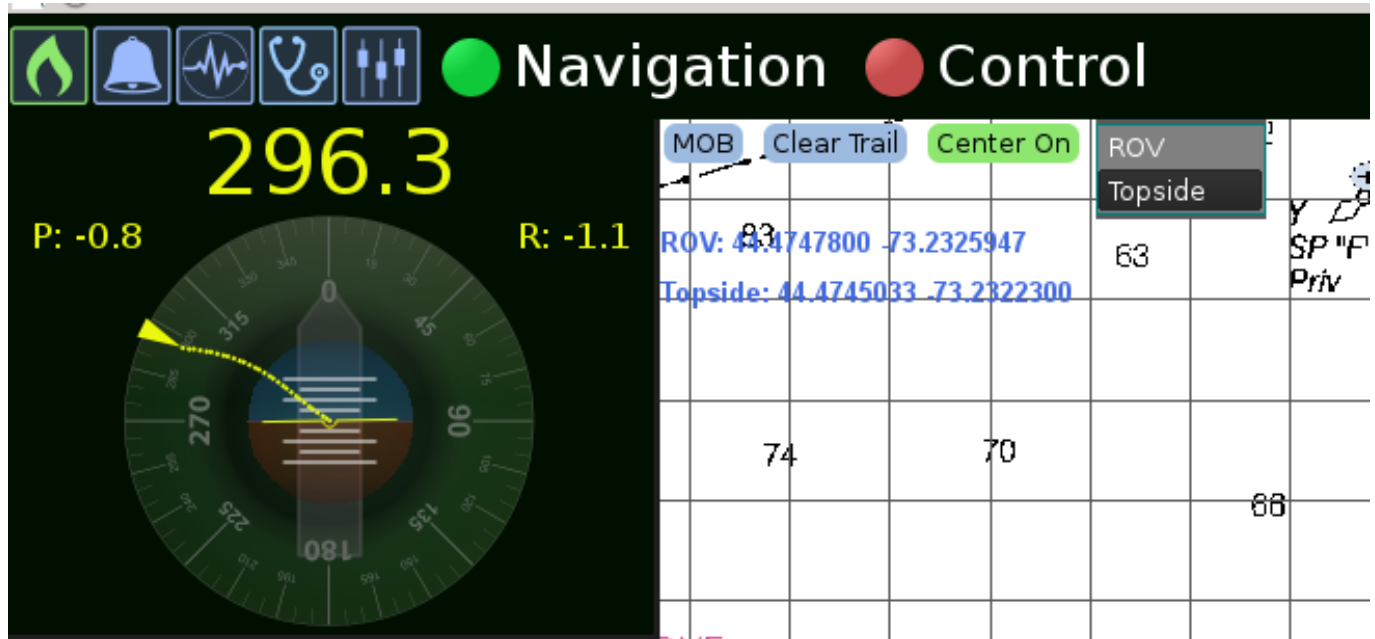


ROV to Topside Display

"How do I change my display from ROV to TOPSIDE?"

There is a toggle box on the top of the main screen that will change the display data from one to the other.



Category: [Workspace - Flight View](#) [1]

Applies to: [Balefire Basic](#) [2]

[Mission View](#) [3]

Article ID: 161

Source URL: <http://localhost:8888/kb2017/rov-topside-display>

Links

[1] <http://localhost:8888/kb2017/main-categories/workspace-flight-view>

[2] <http://localhost:8888/kb2017/applies/balefire-basic>

[3] <http://localhost:8888/kb2017/applies/mission-view>