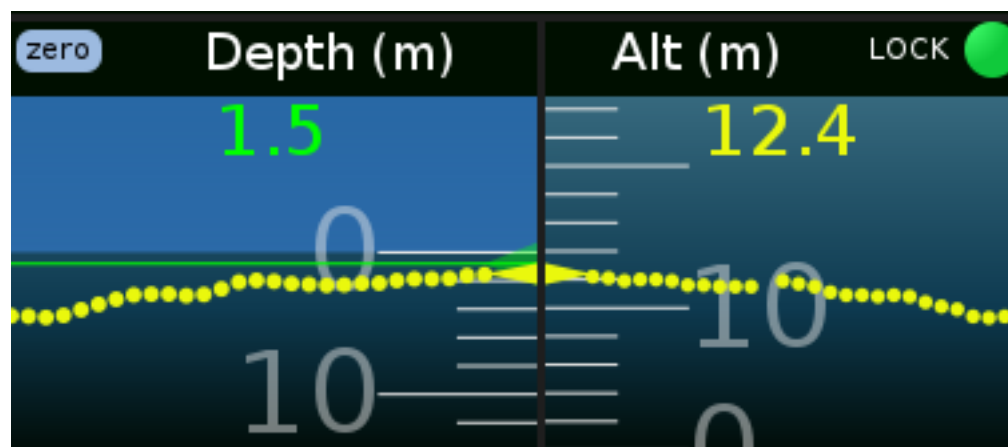


Altitude and Depth Gauges

The depth and altitude gauges are positioned below the compass rose. They display the vehicle's current altitude relative to the sea floor and the depth in meters. The depth and altitude are displayed in yellow when the vehicle is being flown in open-loop mode. Green text and a green line show the Auto Depth or Auto Altitude set point. A dashed breadcrumb trail displays the vehicle's depth and altitude history. If comms are lost, this display will become gray and remain stationary at the last recorded depth and altitude.



| Component | Description |
|-----------|--|
| Zero | Zeroes the depth setting. This is useful to overcome linear offsets due to depth sensor mounting location. The operator can set the depth reading to 0m when the ROV is floating at the surface. |
| Lock | The green LED on the altitude gauge shows if bottom lock is valid. |
| Depth | Displays vehicle depth in yellow (open-loop) or green (Auto Depth) |
| Altitude | Displays vehicle altitude in yellow (open-loop) or green (Auto Altitude) |

Tags: [depth](#) [1]

[altitude](#) [2]

Category: [Workspace - Flight View](#) [3]

Applies to: [Balefire Basic](#) [4]

Article ID: 3

Source URL: <http://localhost:8888/kb2017/altitude-and-depth-gauges>

Links

[1] <http://localhost:8888/kb2017/tags/depth>

[2] <http://localhost:8888/kb2017/tags/altitude>

Altitude and Depth Gauges

Published on Greensea Knowledge Base (<http://localhost:8888/kb2017>)

[3] <http://localhost:8888/kb2017/main-categories/workspace-flight-view>

[4] <http://localhost:8888/kb2017/applies/balefire-basic>